

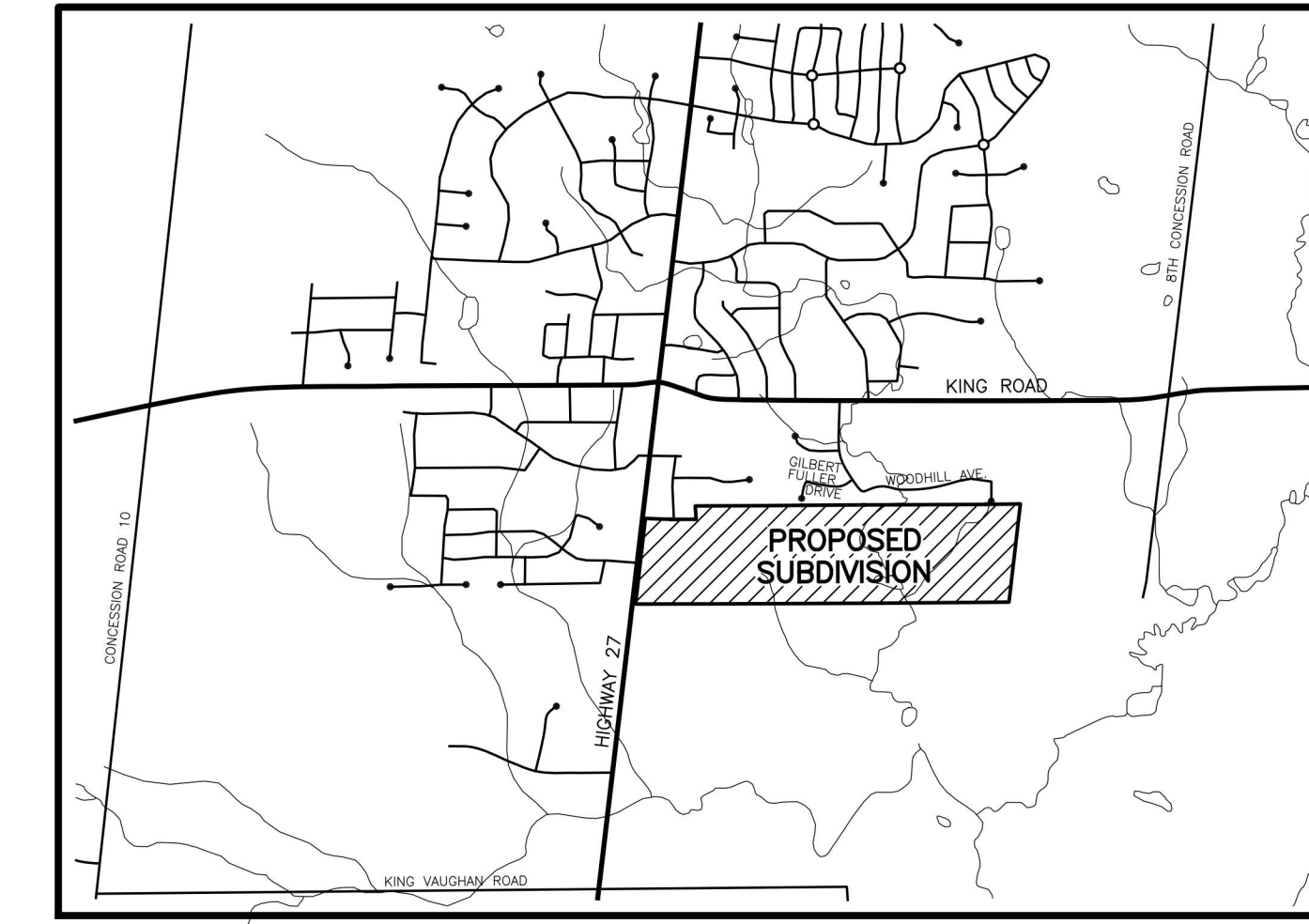
DRAFT PLAN OF SUBDIVISION PART OF LOT 4, CONCESSION 8 TOWNSHIP OF KING REGIONAL MUNICIPALITY OF YORK

SCALE 1:2000

SECTION 51, PLANNING ACT, ADDITIONAL INFORMATION

- A. AS SHOWN ON DRAFT PLAN
- B. AS SHOWN ON DRAFT PLAN
- C. AS SHOWN ON DRAFT PLAN
- D. SEE SCHEDULE OF LAND USE
- E. AS SHOWN ON DRAFT PLAN
- F. AS SHOWN ON DRAFT PLAN
- G. AS SHOWN ON DRAFT PLAN
- H. MUNICIPAL PIPED WATER AVAILABLE AT TIME OF DEVELOPMENT
- I. CLAY-LOAM
- J. AS SHOWN ON DRAFT PLAN
- K. SANITARY AND STORM SEWERS, GARBAGE COLLECTION, FIRE PROTECTION
- L. AS SHOWN ON DRAFT PLAN

DRAFT PLAN 19T-



KEY PLAN

N.T.S.

SCHEDULE OF LAND USE

TOTAL AREA OF LAND TO BE SUBDIVIDED = 57.215 ±Ha. (141.381 ±Acs.)

LOTS FOR SINGLE DETACHED DWELLINGS	BLOCKS	LOTS	UNITS	±Ha.	±Acs.	
LOTS 218-257 & 414-436 MIN. LOT FRONTAGE=18.9m, MIN. LOT AREA=570m ²		63	63	6.099	15.071	
LOT 10-14, 78, 84, 101, 124-128, 136-138, 168-177, 202, 203, 262-267, 272-276, 279-284, 289-293, 296-300, 306-310, 313-317, 323-327, 330-334, 340-344, 347-351, 357-361, 364-378, 381-395 and 398-412 MIN. LOT FRONTAGE=12.8m, MIN. LOT AREA=390m ²		135	135	5.827	14.399	
LOTS 1-9, 15-77, 79-83, 85-100, 102-123, 129-135, 139-167, 178-201, 204-217, 258-261, 268-271, 277, 278, 285-288, 294, 295, 301-305, 311, 312, 318-322, 328, 329, 335-339, 345, 346, 352-356, 362, 363, 379, 380, 396, 397 and 413 MIN. LOT FRONTAGE=11.0m, MIN. LOT AREA=330m ²		238	238	9.152	22.615	
SUBTOTAL		436	436	21.078	52.085	
BLOCK 437 - SECONDARY SCHOOL			1	6.084	15.034	
BLOCKS 438 - PARK			1	1.868	4.616	
BLOCKS 439-441 - STORM WATER MANAGEMENT			3	3.912	9.667	
BLOCK 442 - SUPPORTING EMPLOYMENT			1	4.878	12.054	
BLOCKS 443-447 - BUFFER			5	3.299	8.152	
BLOCKS 448-452 - NATURAL HERITAGE SYSTEM			5	4.127	10.198	
BLOCKS 453-455 - OPEN SPACE			3	0.872	2.155	
BLOCK 456 - ROAD WIDENING			1	0.181	0.447	
BLOCK 457 - WALKWAY			1	0.025	0.062	
STREETS			10.891	26.911		
26.0m WIDE TOTAL LENGTH= 893m. AREA= 2.257±Ha.						
23.0m WIDE TOTAL LENGTH= 199m. AREA= 0.458±Ha.						
20.0m WIDE TOTAL LENGTH= 4052m. AREA= 8.176±Ha.						
TOTAL				LENGTH=5143m. AREA= 10.891±Ha.		
TOTAL		21	436	436	57.215	141.381

NOTES: - ELEVATIONS RELATED TO CANADIAN GEODETIC DATUM

OWNER'S CERTIFICATE

WE AUTHORIZE KLM PLANNING PARTNERS INC. TO PREPARE AND SUBMIT THIS DRAFT PLAN OF SUBDIVISION TO THE TOWNSHIP OF KING FOR APPROVAL

OWNER:

PREBRICK SYSTEM CORP.

C/O

TREASURE HILL
1681 LANGSTAFF ROAD
UNIT 1, VAUGHAN ONTARIO
L4K 5T3

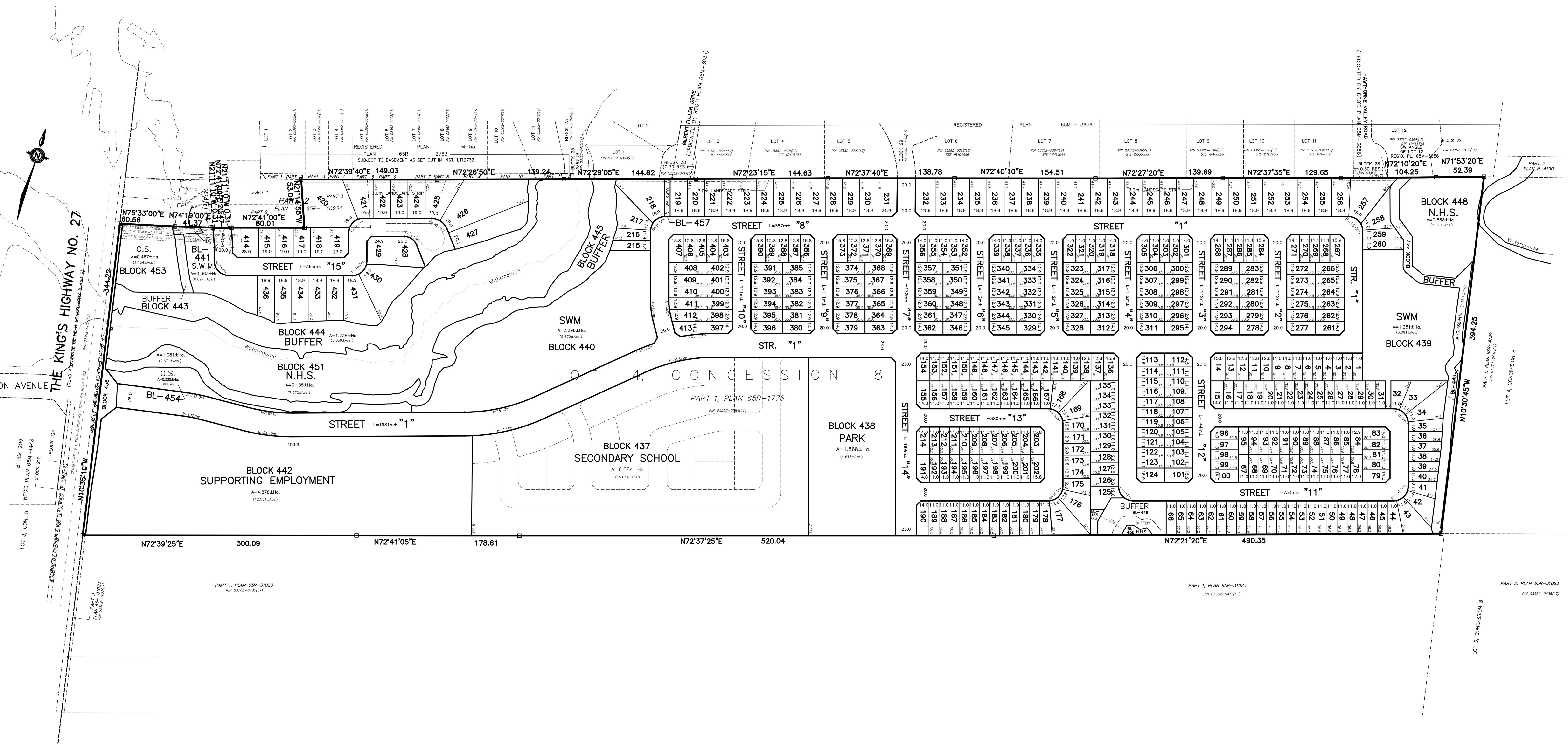
NICHOLAS FIDEI
PRESIDENT

SURVEYOR'S CERTIFICATE

I HEREBY CERTIFY THAT THE BOUNDARIES OF THE LAND TO BE SUBDIVIDED AS SHOWN ON THIS PLAN, AND THEIR RELATIONSHIP TO THE ADJACENT LAND ARE ACCURATELY AND CORRECTLY SHOWN.

DATE: OCTOBER 14, 2022

DACIAN N. POPA
O.L.S., O.L.I.P.



KLM PROJECT No. P-3154
PLANNING PARTNERS INC. SCALE 1:2000 DEC. 20, 2024
(3154DES36) X-REF: (3154MAS1 & 3154TOPO1)
DWG. No. - 24:12
64 JARDIN DRIVE - UNIT 1B, CONCORD ONTARIO L4K 3P3
TEL: (905) 669-4055 FAX: (905) 669-0097 design@klmplanning.com
Planning • Design • Development