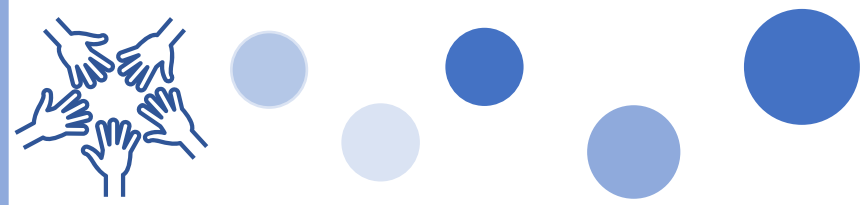


Growth Management Strategy and Employment Land Strategy



What is the Purpose of the Growth Management (GMS) and Employment Land (ELS) Strategies?

- Review existing Employment Areas and employment conditions and undertake an Employment Area vacant land supply analysis.
- Provide a 5-year population, housing, and employment forecast for each Village, and for the remaining rural areas.
- Prepare Employment and Community Area land needs analysis to 2051.
- Present options for additional Employment Area lands beyond the 2051 planning horizon.
- Assess existing Official Plan policies and provide recommendations to inform the Township's ongoing Official Plan Review.

50+ Virtual Open House Attendees

40+ ELS & GMS Open House Attendees



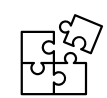

10+ One-on-One ELS Interviews

200+ Downloads of Open House Presentation

What We Heard

- Balance growth and settlement area boundary expansions with preserving King's character and the natural environment.
- Provide opportunities economic growth and redevelopment in the rural area and Hamlets.
- Desire for more commercial and retail opportunities in King City.
- Preference for the southwest option (Option #2) for Employment Area growth in Nobleton.
- Support for designating additional lands for Employment across the Township.
- Require commercial and/or institutional uses in all buildings within the Mixed-Use designation and develop policies to ensure that commercial space is retained when commercial sites redevelop.
- Ensure appropriate transition in built form between the Village Core Areas and Established Neighbourhoods.
- Provide opportunities for minor infill in existing neighbourhoods.
- Desire for new residential and Community Areas areas in Nobleton to accommodate future growth.

Next Steps

-  Meet with interested and affected parties.
-  Respond to comments and questions.
-  Incorporate Council direction and recommendations into the Official Plan Review.
-  Present final recommendations and draft Official Plan Amendments to Council.

