

DRAFT PLAN OF
STANDARD CONDOMINIUM OF
PART OF LOT 3,
REGISTERED PLAN 87
TOWNSHIP OF KING
REGIONAL MUNICIPALITY OF YORK

SCALE 1:300
10m 0 10m 20m 30m 40 metres

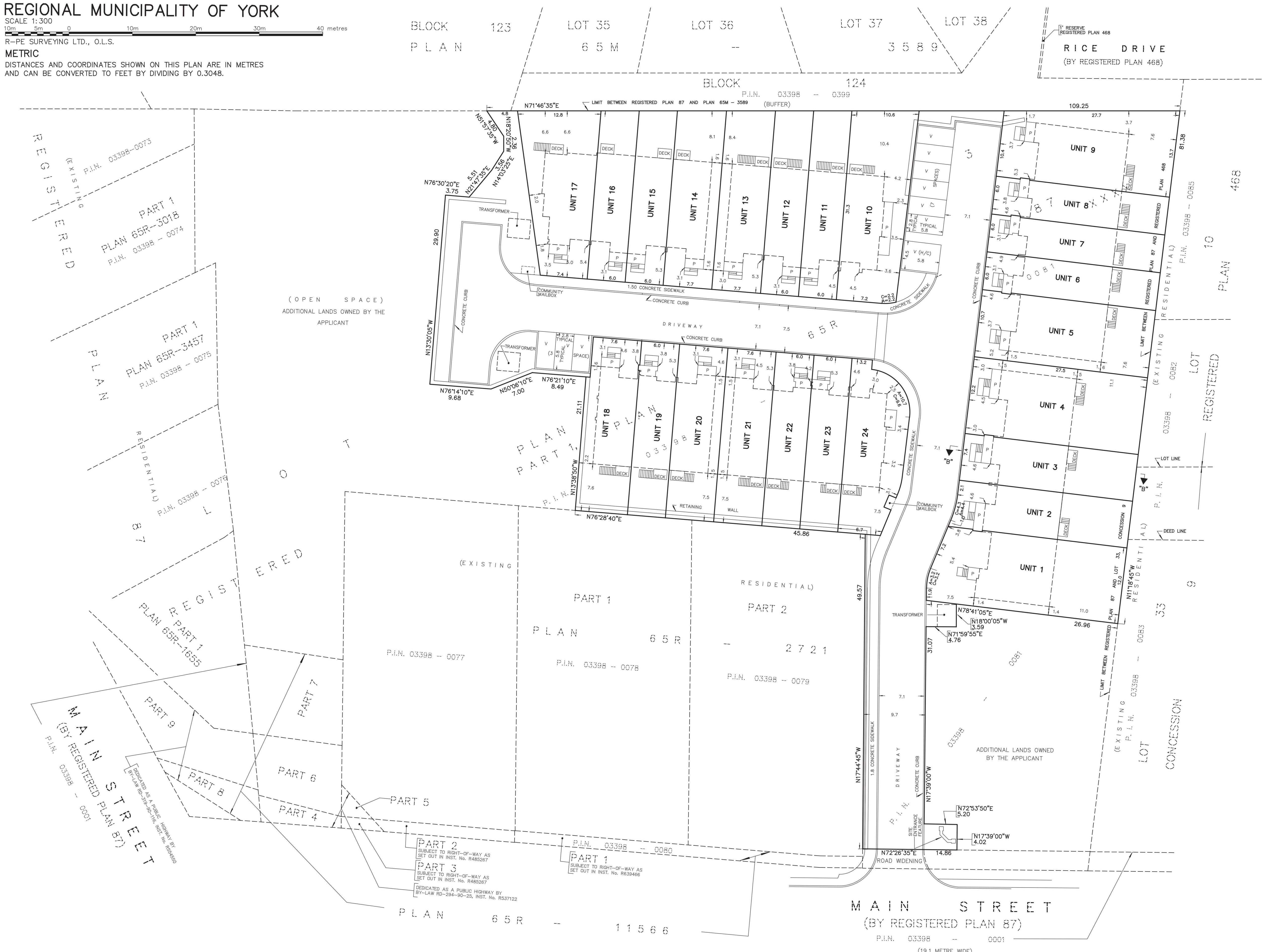
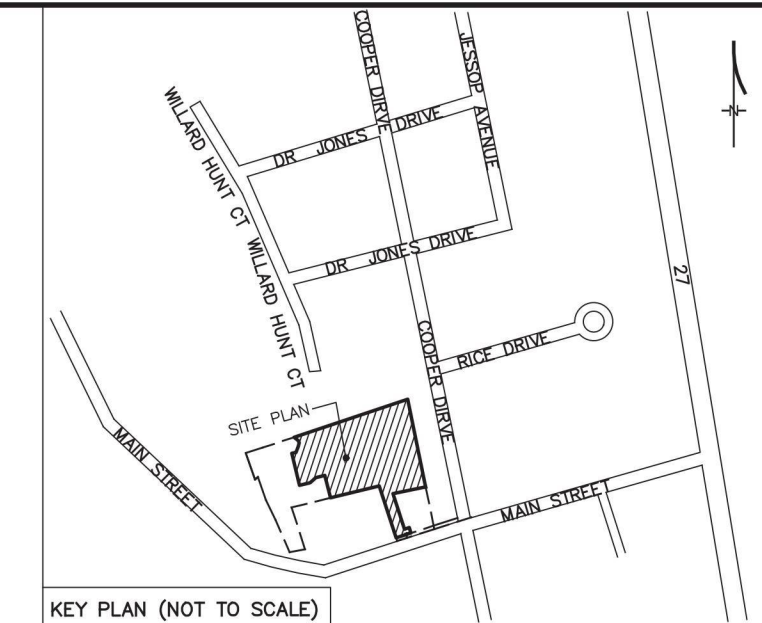
R-PE SURVEYING LTD., O.L.S.

METRIC

DISTANCES AND COORDINATES SHOWN ON THIS PLAN ARE IN METRES
AND CAN BE CONVERTED TO FEET BY DIVIDING BY 0.3048.

NOTES

- P.I.N. DENOTES PROPERTY IDENTIFIER NUMBER
- H/C DENOTES HANDICAP PARKING
- P DENOTES VISITOR PORCH
- V DENOTES VISITOR PARKING
- ALL AREA MEASUREMENTS ARE COMPUTER GENERATED.



ADDITIONAL INFORMATION REQUIRED UNDER SECTION 51 (17) OF THE PLANNING ACT.

- b) SEE PLAN
- c) SEE KEY PLAN
- d) RESIDENTIAL
- e) SEE PLAN
- f) SEE PLAN
- g) SEE PLAN AND KEY PLAN
- h) PIPED WATER
- i) SEE SOIL REPORT
- j) SEE SITE PLAN
- k) FULLY SERVICED
- l) SEE PLAN

SURVEYOR'S CERTIFICATE

I HEREBY CERTIFY THAT THE BOUNDARIES OF THE LANDS TO BE SUBDIVIDED AND THEIR RELATIONSHIP TO THE ADJOINING LANDS ARE ACCURATELY AND CORRECTLY SHOWN.

DATE JANUARY 9th 2025

Flukey Kumaranayake
A. U. KUMARANAYAKE
ONTARIO LAND SURVEYOR

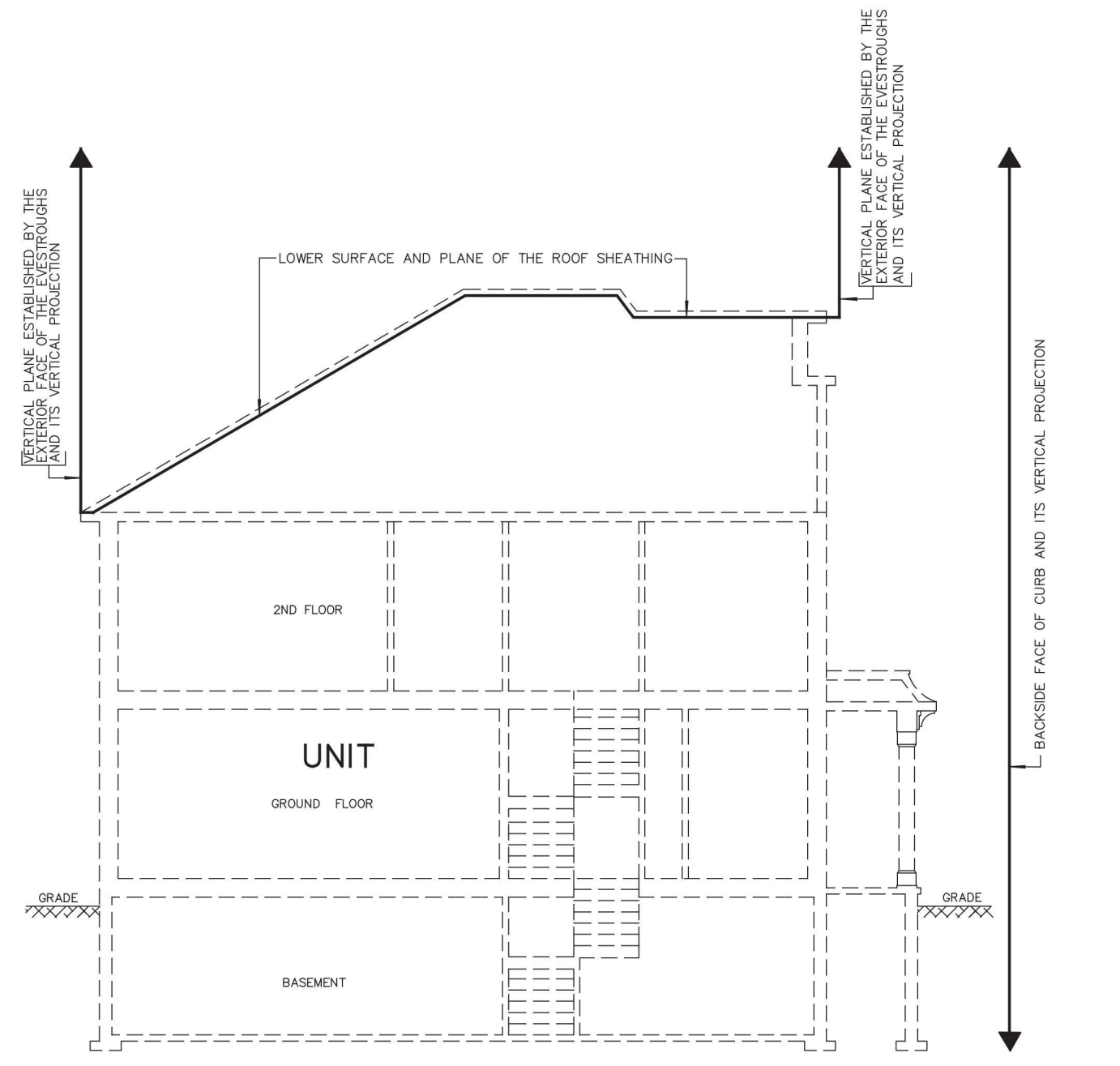
OWNER'S CERTIFICATE

I HEREBY AUTHORIZE R-PE SURVEYING LTD., O.L.S. TO PREPARE AND SUBMIT THIS DRAFT PLAN OF STANDARD CONDOMINIUM TO THE TOWNSHIP OF KING FOR APPROVAL.

DATE JANUARY 9th 2025

66 MAIN ST DEVELOPMENTS INC.

Signed by:
Christopher O'Hanlon
CHRIS O'HANLON
AUTHORIZED SIGNING OFFICER
I HAVE THE AUTHORITY TO BIND THE CORPORATION



SECTION "B"- "B" TO ILLUSTRATE TYPICAL UNIT BOUNDARIES FOR UNITS 1 TO 24, INCLUSIVE ON LEVEL 1 (NOT TO SCALE)