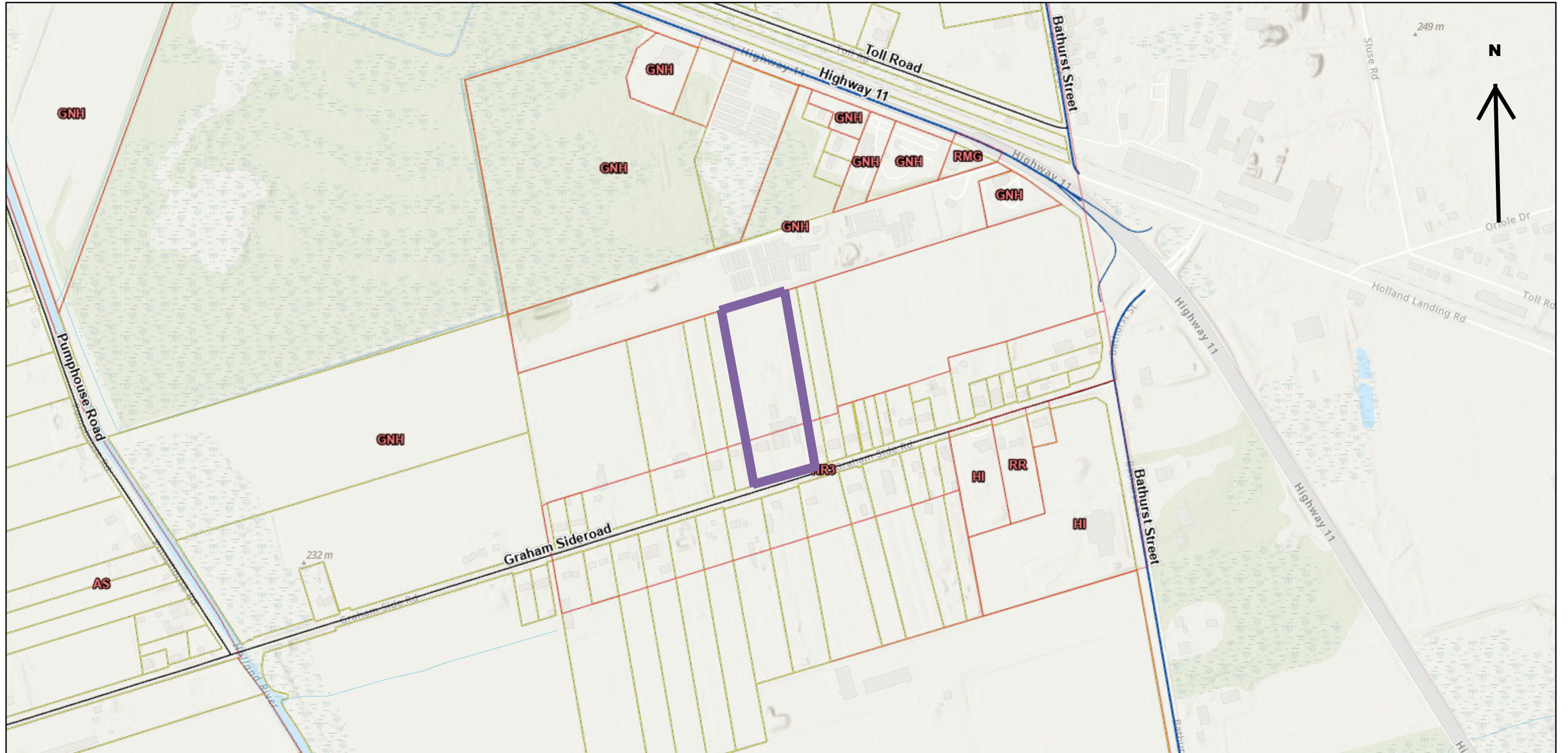











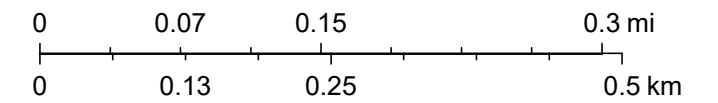
Location Map - 962 Graham Sideroad



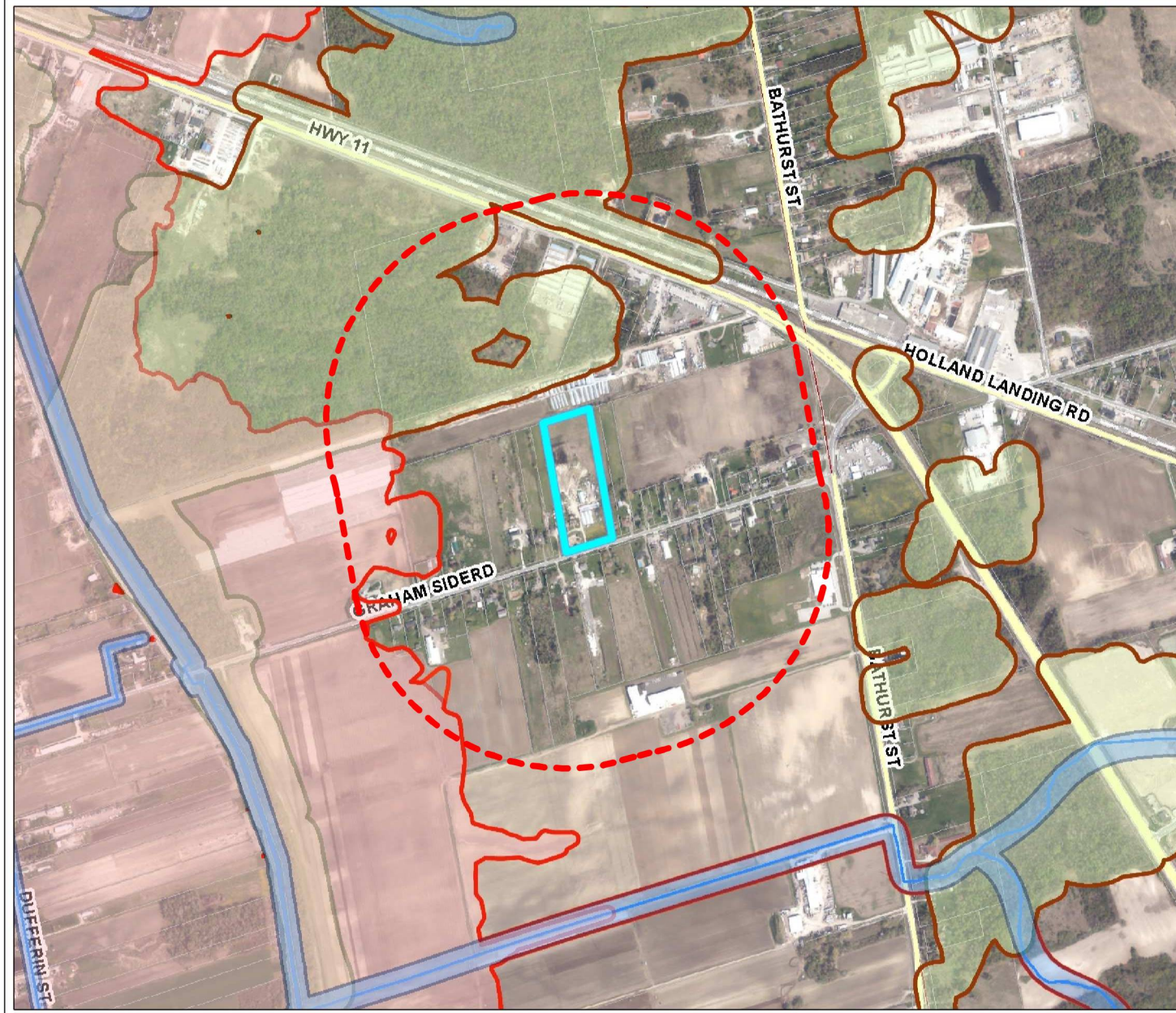
8/12/2025, 3:56:24 PM

- | | | |
|--|---|--|
|  Location Map |  Interchange-Regional Road |  Parcel Fabric |
|  Roads |  Rural Road |  MPAC (Q1 2025) |
|  Regional Road |  Proposed Road |  Zoning By-law |

1:9,028



Esri Community Maps Contributors, Province of Ontario, York Region, Esri Canada, Esri, TomTom, Garmin, SafeGraph, GeoTechnologies, Inc, METI/NASA, USGS, EPA, NPS, US Census Bureau, USDA, NRCan, Parks Canada, Esri, NASA, NGA, USGS, FEMA



Features

- Current Apparent Valleyland with Setback
- Current Meanderbelt with Setback
- Current Floodplain with Setback
- Current Wetland with Adjacent Land
- LSRCA Watershed Boundary
- Lake Simcoe
- Watercourse
- Current Regulation Limit Boundary

Road Labels

- Assessment Parcel

Roads

- Hwy 400 Series
- Highway, Arterials
- Local Road

Railway

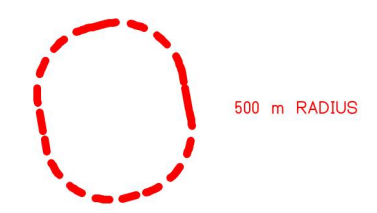
Printed On:
4/26/2024



WGS_1984_Web_Mercator_ Auxiliary_Sphere
Mapped By:

This product was produced by the Lake Simcoe Region Conservation Authority and some information depicted on this map may have been compiled from various sources. While every effort has been made to accurately depict the information, data/mapping errors may exist. This map has been produced for illustrative purposes from an interactive web mapping site. LSRCA GIS Services DRAFT printed 2024. © LAKE SIMCOE REGION CONSERVATION AUTHORITY, 2024. All Rights Reserved. The following data sets of Assessment Parcel, Roads, Upper & Lower Tier Municipalities, Wetlands are © Kings Printer for Ontario. Reproduced with Permission, 2024. The Current Regulation Limit and Boundary data sets are derived products from several datasets. Orthophotography 2002, 2005, 2007-2009, 2011-2023, © First Base Solutions, Inc.

Scale 1: 14,154



2	Issued for Planning	DF	26/04/24
1	Issued for Planning	DF	25/11/23
REV:	DESCRIPTION	BY:	DATE
STATUS: ISSUED FOR PLANNING			
CLIENT: Wayne Bakker			
PROJECT: Proposed Lot Severance			
SITE: 962 Graham Sideroad Newmarket, ON			
TITLE: Features Map			
SCALE AT 11"x17": As Noted	DATE: 26/04/24	DRAWN: DF	
PROJECT NO: 23-0068	DRAWING NO: P-2	REVISION: 2	