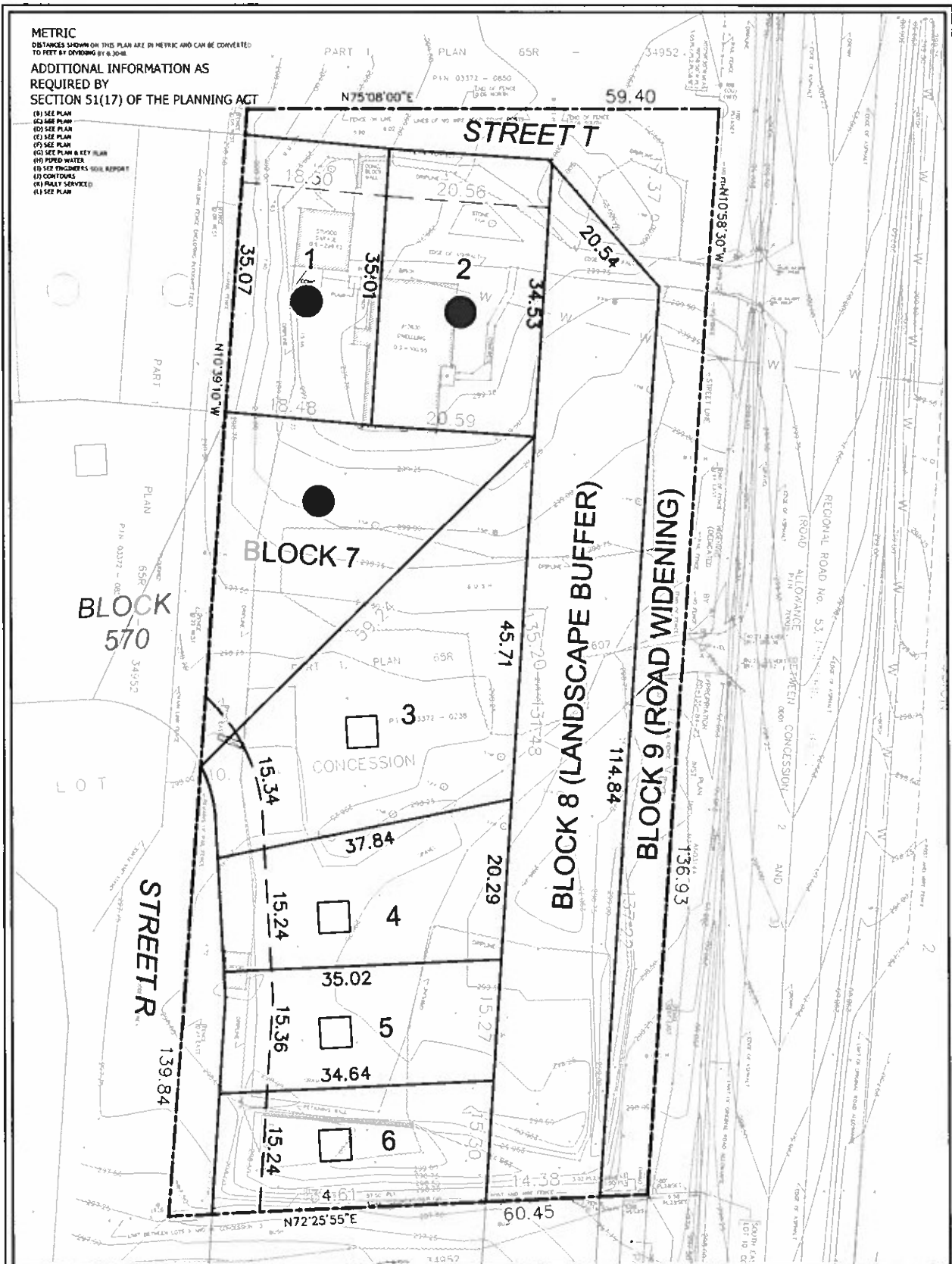


METRIC
 DISTANCES SHOWN ON THIS PLAN ARE IN METRIC AND CAN BE CONVERTED TO FEET BY DIVIDING BY 0.3048

ADDITIONAL INFORMATION AS REQUIRED BY SECTION 51(17) OF THE PLANNING ACT

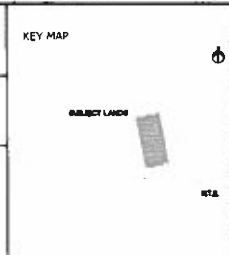
- (B) SEE PLAN
- (C) SEE PLAN
- (D) SEE PLAN
- (E) SEE PLAN
- (F) SEE PLAN
- (G) SEE PLAN
- (H) SEE PLAN
- (I) SEE PLAN
- (J) SEE PLAN
- (K) SEE PLAN
- (L) SEE PLAN
- (M) SEE PLAN
- (N) SEE PLAN
- (O) SEE PLAN
- (P) SEE PLAN
- (Q) SEE PLAN
- (R) SEE PLAN
- (S) SEE PLAN
- (T) SEE PLAN
- (U) SEE PLAN
- (V) SEE PLAN
- (W) SEE PLAN
- (X) SEE PLAN
- (Y) SEE PLAN
- (Z) SEE PLAN



Battle Consulting
 113 Eglar Ave. Unit 11, Scarborough, ON M1V 1Y7
 Tel: (416) 881-1818 Fax: (416) 881-1888
 www.battleconsulting.ca

DRAFT PLAN OF SUBDIVISION

13630 DUFFERIN STREET
 PART OF LOT 10 CONCESSION 3
 GEOGRAPHIC TOWNSHIP OF KING
 TOWNSHIP OF KING
 REGIONAL MUNICIPALITY OF YORK



SCHEDULE OF LAND USE

LOT/BLOCKS	LAND USE	AREA (sq m)
Lot 1	Rural Residential	0.0888
Lot 2	Rural Residential	0.0730
Lot 3	Rural Residential	0.1116
Lot 4	Rural Residential	0.0230
Lot 5	Rural Residential	0.0026
Lot 6	Rural Residential	0.0325
Block 1	Rural Residential	0.0870
Block 2	Landscaped Buffer	0.1771
Block 3	Reed Wetland	0.0815
Block 4	20m Road	0.0003
Block 5	20m Road	0.0079
Block 6	20m Road	0.0033

APPROVAL

APPROVAL SUBJECT TO CONDITIONS IN ACCORDANCE WITH SECTION 51(17) OF THE PLANNING ACT R.M. OF YORK, 2018

DIRECTOR OF PLANNING
 Township of King

SURVEYORS CERTIFICATE

I HEREBY CERTIFY THAT THE BOUNDARIES OF THE LANDS TO BE SUBDIVIDED AND THE ADJACENT TO THE SUBDIVIDED LANDS ARE ACCURATELY AND CORRECTLY SHOWN.

2018-02-06

PLANNING DEPT. 21.1
 MCKINSTRY & ASSOCIATES SURVEYING LTD.

OWNERS CERTIFICATE

I HEREBY CERTIFY THAT THE APPLICANT IS THE OWNER OF THE SUBJECT LANDS AND THAT THE APPLICANT IS NOT PROVIDING ANY INFORMATION TO SUPPORT THIS PLAN THAT IS IN VIOLATION OF THE PROVISIONS OF THE PLANNING ACT, R.M. OF YORK, 2018.

DATE: _____
 SIGNATURE: _____

REVISION: _____
DATE: _____

SCALE: 1:300

VERSION: VER-01

A1

PROJECT: SUPCO

DATE: FEB 2018