

The background of the slide is a photograph of the King Township Police Station. The building is a two-story structure with a brick facade and large windows. Several flagpoles are visible in front of the building, flying the Canadian flag, a red flag, and a rainbow flag. A sign with the word 'KING' in blue and green letters is mounted on the brick wall. A circular police crest is also visible on the building's facade.

King Township Growth Management Strategy and Employment Lands Strategy

Council Presentation

June 17, 2025

Purpose of Presentation

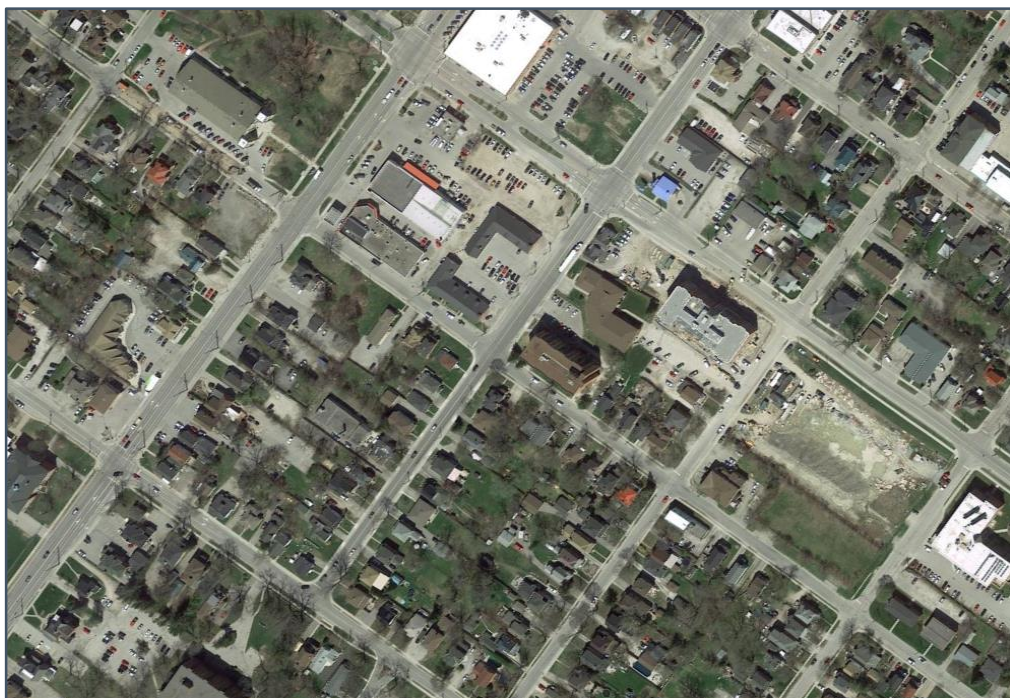


- Council endorsed the previous GMS/ELS presentation, with slight modifications to Community Area expansion densities in Nobleton.
- Watson subsequently completed a detailed traffic zone analysis using custom Statistics Canada data and recent building permit activity.
- This analysis provided updated population and housing estimates by Village, including the intensification outlook for each.
- These updated estimates, combined with modified Nobleton densities, have impacted the DGA Community Area land needs analysis to 2051.

Urban Settlement / Village Area Components



Community Areas



All forms of housing and most population-related employment and office jobs.

Includes commercial employment (such as retail, service sectors, office jobs) and institutional

Employment Areas



Employment in industrial-type buildings (such as manufacturing, warehousing, logistics)

Also includes a small share of some ancillary and employment supportive jobs.

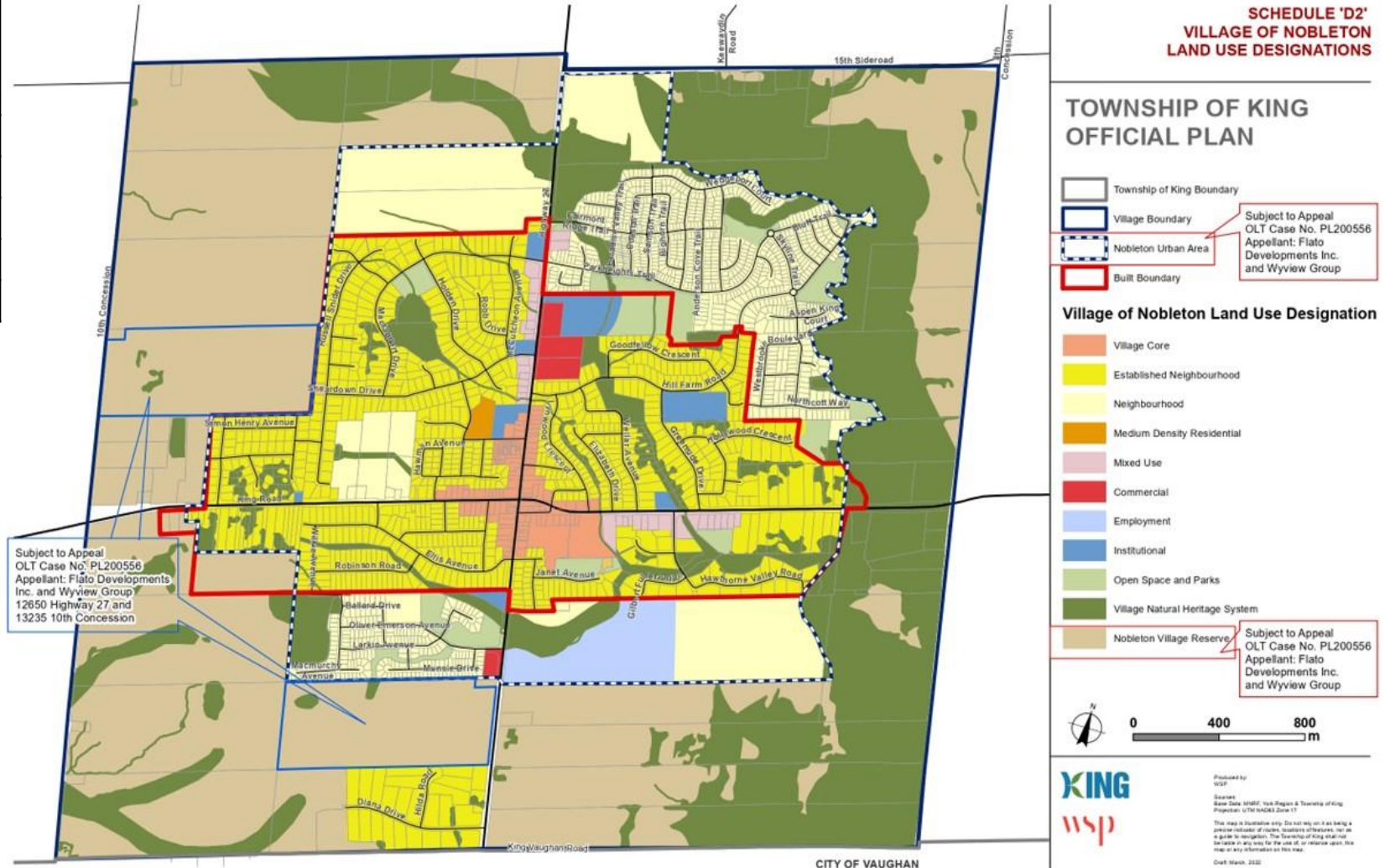
Population Base by Village and Remaining Rural Areas – 2024 and 2025



Village	2024 Population (In G.M.S. Report)	2025 Population (Updated as per T.Z. Forecast)
Nobleton ^[1]	7,050	7,580
King City	9,690	9,990
Schomberg	2,620	2,540
Remaining Rural	10,440	9,690
King Township Total	29,800	29,800

[1] Includes both the Nobleton Urban Area and the Nobleton Village Reserve lands.

Source: King Township G.M.S. forecast by Watson & Associates Economists Ltd., 2025.



Population Forecast by Village and Remaining Rural Areas



Original GMS Forecast by Village

Village	2024 Population	2024 to 2051	2051 Population	2051 Population Share
Nobleton	7,050	6,530	13,580	27%
King City	9,690	13,530	23,220	45%
Schomberg	2,620	720	3,340	7%
Remaining Rural	10,440	420	10,860	21%
King Township Total	29,800	21,200	51,000	

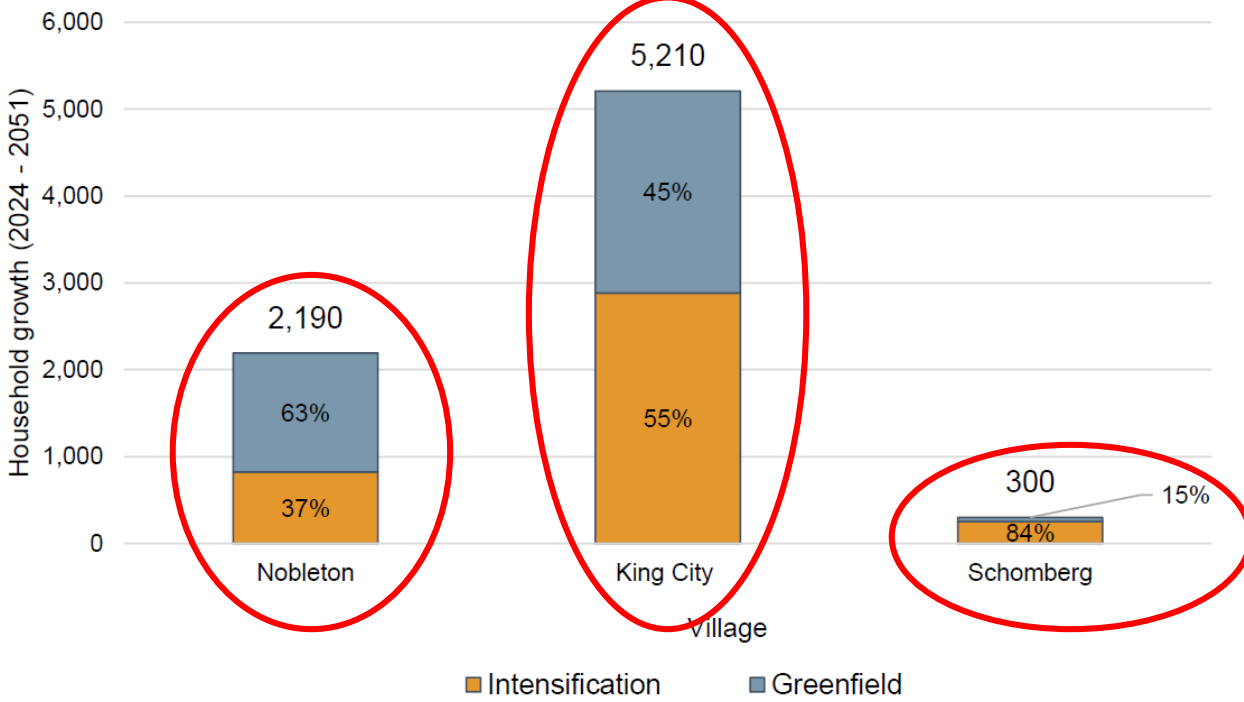
Updated GMS Forecast by Village

Village	2025 Population	2025 to 2051	2051 Population	2051 Population Share
Nobleton	7,580	6,750	14,330	28%
King City	9,990	13,230	23,220	45%
Schomberg	2,540	800	3,340	7%
Remaining Rural	9,690	420	10,110	20%
King Township Total	29,800	21,200	51,000	

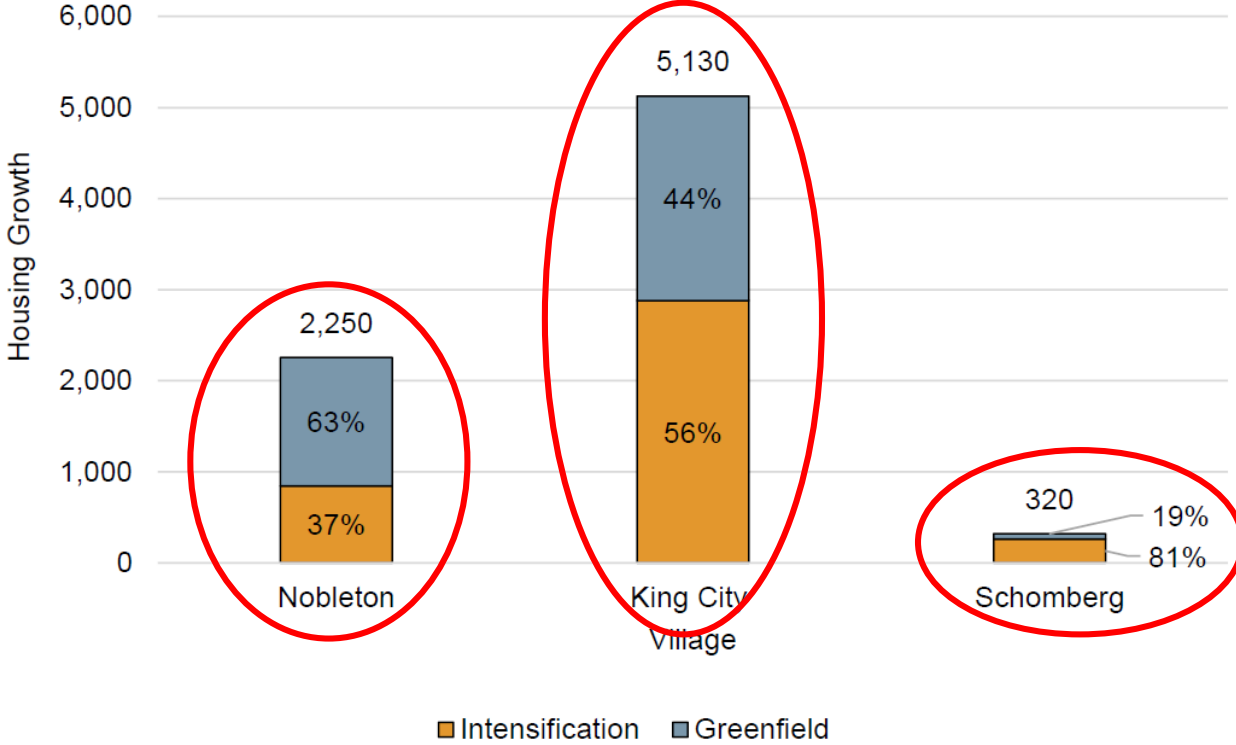
Village Housing Forecast by Policy Area



Original GMS Forecast by Village



Updated GMS Forecast by Village

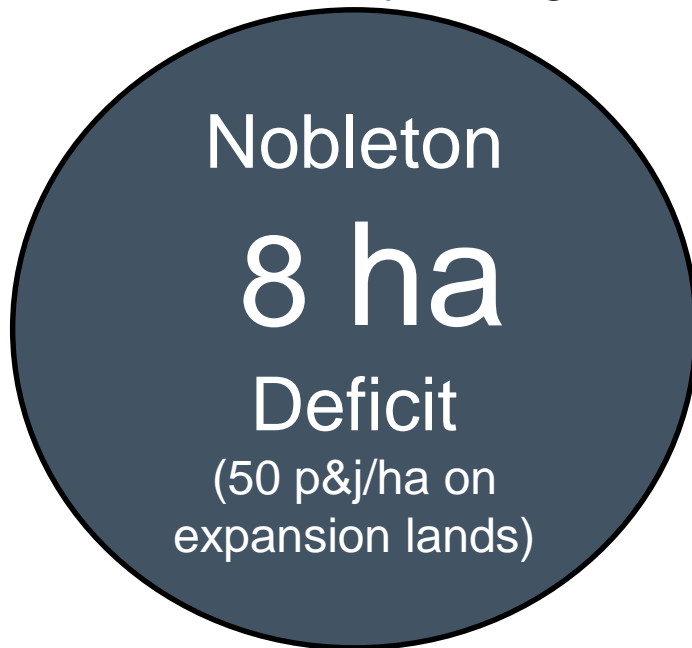


King Township D.G.A. Community Area Land Needs by Village, 2051

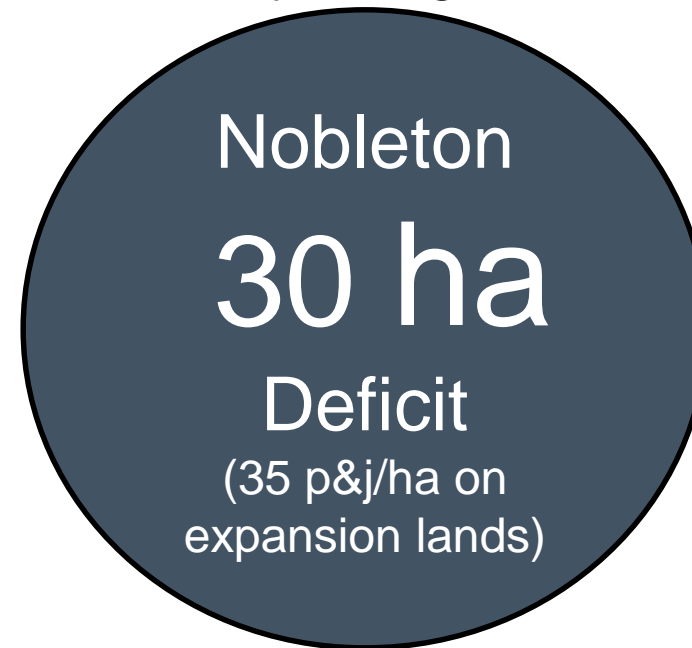


- King City and Schomberg land needs by 2051 remain unchanged at 0 hectares.
 - Minor refinements were made to the growth distribution between intensification and greenfield areas in King City and Schomberg.

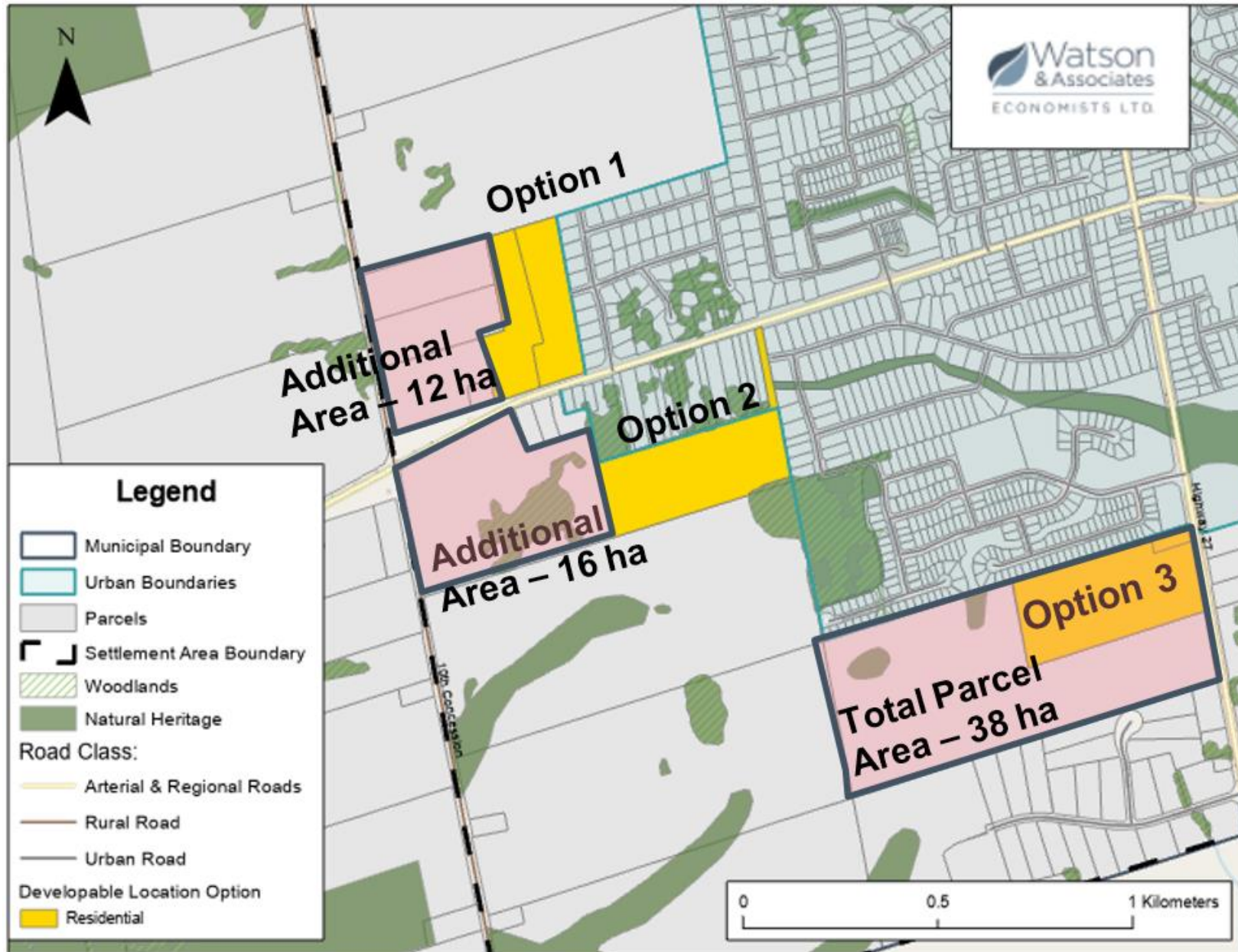
Original GMS
Forecast by Village



Updated Forecast
by Village



Nobleton Location Options for a New Community Area



Conclusions



- King Township's 2025 population estimate has been updated to 29,800, consistent with the 2024 GMS projection.
- Long-term 2051 population targets for Schomberg and King City remain unchanged.
- Updated residential base data has increased the 2051 outlook for Nobleton.
- Minor refinements were made to the growth distribution between intensification and greenfield areas in King City and Schomberg.
- Nobleton's Community Area land need has increased from 8 hectares to 30 hectares.
- While the required land need has grown, the general expansion areas identified in the GMS remain valid, with flexibility for revised configurations.